



SV-M4K40

A Technological Innovation for Fluorescence Guided Surgery



SonoScape Medical Corp.
2F, 12th Building, Shenzhen Software Park Phase II, Keji Middle
2nd Road, Shenzhen, China
Tel: +86-755-26722890 Fax: +86-755-26722850
Email: market@sonoscape.net www.sonoscape.com

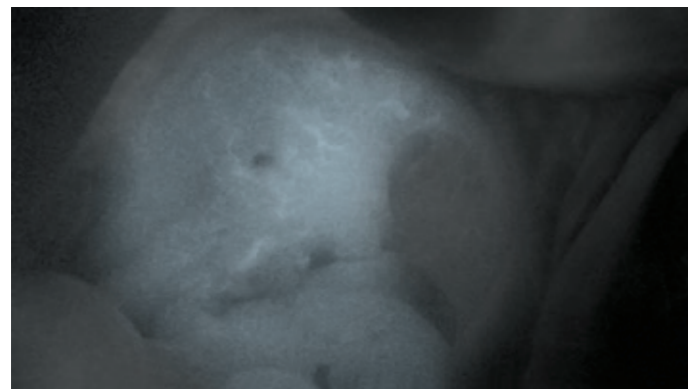
ISO 13485 CE 0197

E-SVM4K4020230627

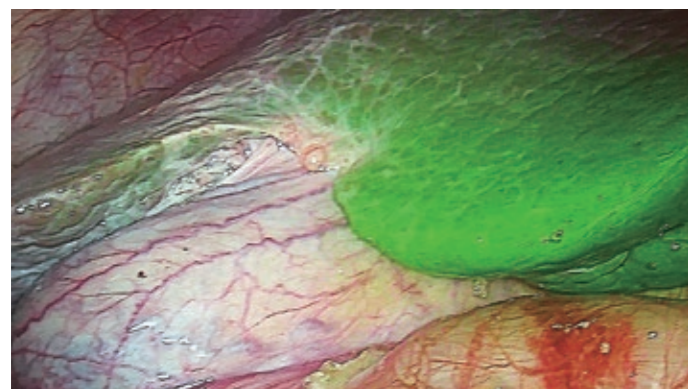
Experience enhanced 4K visualization and precision in surgical techniques, designed to provide superior anatomic imaging in fluorescence guided surgery. Discover the SonoScape 4K NIR Surgical Imaging System.

SV-M4K40

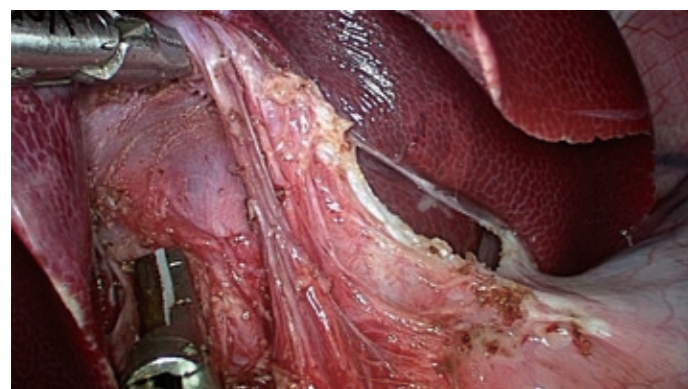
Multiple NIR Imaging Modes



NIR

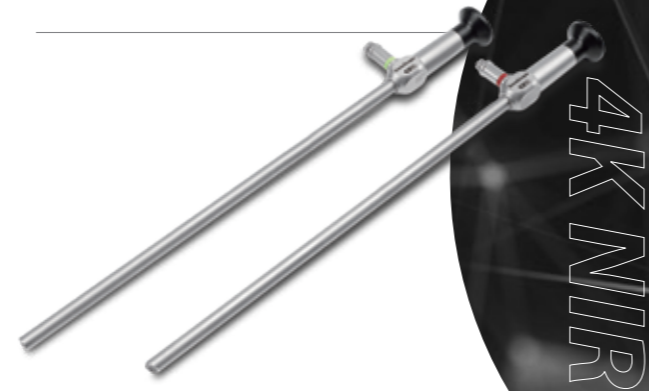


Overlay



White Light

SUPERIOR 4K NIR ROD-LENS TELESCOPES



4K NIR INNOVATION IN FLUORESCENCE GUIDED SURGERY



A sublime combination beyond compare

Coupled with our premium 4K NIR Rod-lens Telescopes, you can expect sharp and clear visual images that are essential towards supporting applications in fluorescence guided surgeries. The new SonoScape IR telescope has been optimized for both white light and surgeries in NIR. Developed based on the rod lens system using scratch resistant sapphire crystal distal tip lenses, it offers edge-to-edge clarity and enhanced illumination of the surgical field.

Uncompromised 4K NIR overlay imaging that you deserve

Equipped with a 4K 3CMOS and a dedicated CMOS NIR sensor, allows a much superior fluorescence imagery with optimal and precise overlay imaging mode. Discover the lossless image quality when switching between white light and NIR.



Technical Specifications

SV-M4K40



Processor SV-M4K40

Resolution	3840 x 2160p,60Hz,> 8M Pixels
Fluorescence Mode	Native Near Infrared Red, NIR Overlay
Video Output Signals	HDMIx1:3840*2160,DVIx2,HD-SDIx2:1920*1080
Camera Chip Sensors	4CMOS:3CMOS White light , 1CMOS Near Infrared (NIR)
Optical Coupler	F=25mm
White Balancing	Auto White Balancing, Memory
Dimming	0-9levels
Auto Gain Control	YES
Edge Enhancement	0-31 levels.1 step continuous adjustment
Contrast Enhancement	+/-127.1 step continuous adjustment
Metering Modes	Full, Wide, Circle
Video Recording Format	Native 4K, 3840 x 2160p, 60fps, MP4 format

Technical Specifications

SL-EL40



LED Light Source SL-EL40

Main Lamp	3LED + 1 Laser
Modes	White Light + Near Infrared Modes
Light Temperature	3000K~7000K
Lumens	1400lm
CRI	≥90
Intensity	0-19 levels, Continuous Adjustments
Lifespan	LED : 40,000hrs Laser : 10,000hrs

NIR Laparoscopes (4KIR.305.100/4KIR.305.103)

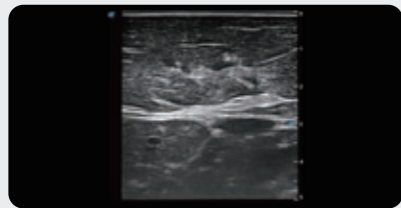
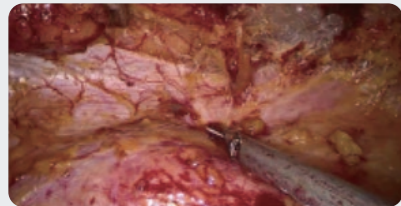
TelescopeΦ	Working length	Direction of view	Field of view	Sterilisation
10.0 mm NIR 4K Scope	307 mm	0°	wide angle	Autoclavable
10.0 mm NIR 4K Scope	307 mm	30	wide angle	Autoclavable

Laparoscopic Ultrasound Image-Guided Surgery

Clinical Excellence in Any Conditions

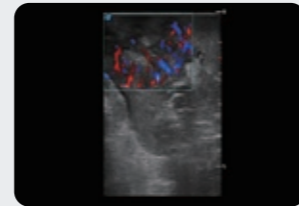
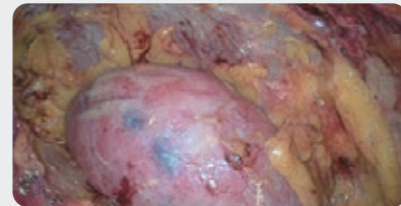
Hepatobiliary Surgery

ILUS can be used routinely to identify the common bile duct, common hepatic duct, and intrahepatic bile ducts to determine dilation or bile duct stones. It can be considered as an alternative to intraoperative cholangiography to identify choledocholithiasis during laparoscopic cholecystectomy.



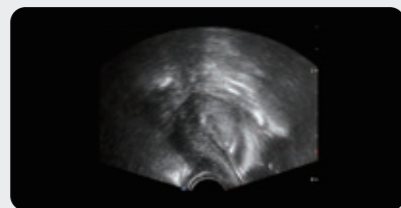
Urology

ILUS can be extremely useful in advanced laparoscopic renal surgery. In a number of situations, it is an essential surgical tool. ILUS proved useful in defining the anatomy during laparoscopic perinephric exploration, assessing renal vein thrombi during laparoscopic nephrectomy, and evaluating renal perfusion during laparoscopic renal artery aneurysm repair.



Gynecology

ILUS is helpful in laparoscopic myomectomy, particularly when the uterine contour is normal. It is also useful in defining pelvic anatomy in cases of complex reproductive procedures. ILUS improves visualization of anatomy, reduces complication and re-operation rates, and facilitates completion of more cases via less-invasive endoscopic approaches.



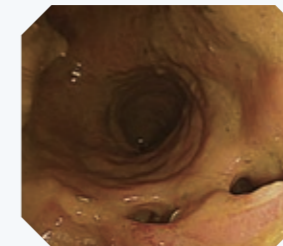
Combined Rigid and Flexible Endoscopic Surgery

Excellent Performance in Any Procedure

Colorectal Surgery

Intraoperative colonoscopy offers the assessment and prevention of anastomotic leakage in low anterior resection for rectal cancer, assessment of stapled anastomosis and reduce postoperative leakages.

- Assessment and prevention of anastomotic leakage in LAR.
- Assessment of stapled anastomosis and directly visualizing the anastomosis line.
- Reduces risks for postoperative leakages.



Thoracic Surgery

Flexible bronchoscopy allows pre-operative evaluation of patient candidate to a bronchial sleeve lobectomy in VATS.

- Flexible bronchoscopy allows pre-operative evaluation of patient candidate to a bronchial sleeve lobectomy in VATS.
- Allows a direct vision of the endobronchial to assist in defining a sleeve lobectomy.
- Provide useful information about the real extent of the tumour.



Bariatric Surgery

Preoperative upper endoscopy helps to rule out any upper gastrointestinal disease that may affect surgery. Gastroscopy can be routinely performed before any bariatric procedure in order to assess the upper gastrointestinal tract for any abnormal findings.

- Routine preoperative endoscopy may help in the discovery of GI pathologies.
- Helps to identify abnormalities such as gastritis, hiatus hernia and esophagitis prior to bariatric surgery.
- Perform an intraoperative leak test, to assess anatomy during revisional bariatric procedures.



HD-550 Flexible Endoscopy System